


8,400'  50.2471° N, -116.9787° W

# SELKIRK SNOWCAT SKIING

EXCLUSIVE  
INVESTMENT  
OPPORTUNITY

Colliers





## **INTRODUCTION**

A rare opportunity has presented itself to own a piece of ski history. Selkirk Snowcat Skiing, the birthplace of snowcat skiing is now on the market. Established in 1975 by skiing pioneer Allan Drury, this legendary operation has built a solid global reputation among powder enthusiasts and backcountry adventurers. As the first snowcat operation, Selkirk had first dibs on what many refer to as the world's best cat serviced terrain. With a rich legacy, loyal clientele, and unmatched alpine tenure, Selkirk Snowcat Skiing is an extraordinary investment for those seeking to own a truly iconic destination.

## **CONTACT**

For all inquiries, please contact:

**Mark Lester**  
Senior Vice President, PREC  
Unique Properties  
+1 604 692 1409  
[mark.lester@colliers.com](mailto:mark.lester@colliers.com)

**Alam Pirani**  
Vice Chairman  
Colliers Hotels  
+1 416 562 6665  
[alam.pirani@colliers.com](mailto:alam.pirani@colliers.com)

**Robin McLuskie**  
Managing Director  
Colliers Hotels  
+1 416 627 9841  
[robin.mcluskie@colliers.com](mailto:robin.mcluskie@colliers.com)





# BACKCOUNTRY HEAVEN

## **12,000 ACRES OF TERRAIN**

Nearly double the size of Whistler Blackcomb and limited to 24 skiers per day

## **THE BENCHMARK**

For World-Class Cat Ski Operations

## **EXPERIENCE OF A LIFETIME**

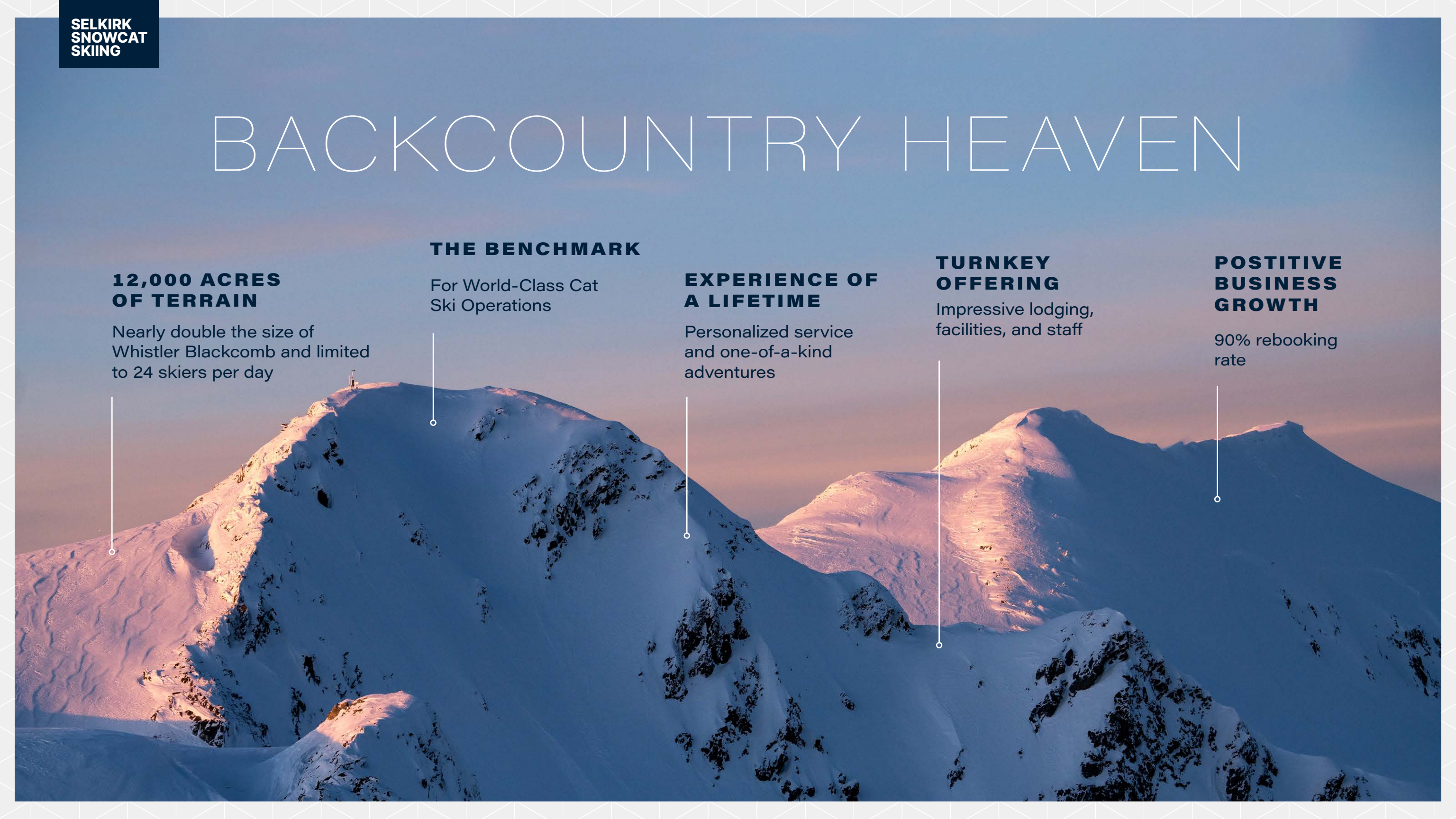
Personalized service and one-of-a-kind adventures

## **TURNKEY OFFERING**

Impressive lodging, facilities, and staff

## **POSITIVE BUSINESS GROWTH**

90% rebooking rate





## UNMATCHED TERRAIN

📍 50.2471° N, -116.9787° W

At 12,000 acres (49 sq kilometres or 19 sq miles) Selkirk's tenure is big - almost double the size of Whistler/Blackcomb. But, statistics don't do it justice. Spectacular peaks surround Selkirk's tenure on Meadow Mountain, framing what is often cited as the best cat serviced terrain in the world. The tenure includes every conceivable mountain aspect which allows Selkirk to operate every day regardless of what Mother Nature throws at you. The extensive network of cat roads scale a breathtaking height of 2,560 metres (8,400 feet) providing access to expansive alpine bowls and an impressive 4,200 feet of vertical skiable terrain, usually only found in heliski terrain. Located at the north end of Kootenay Lake and surrounded by glaciers, Selkirk consistently delivers 10 meters of dry Kootenay coldsmoke every year making it one of the most reliably deep snow zones in the world.





## LOCATION OVERVIEW

📍 50.2471° N, -116.9787° W

Located at 1,280m and only accessed by snowcat, the lodge is the quintessential mountain hide-a-way exclusively for 24 guests. It is the only cat ski lodge where your last run is a 4,000ft thigh burner right to the deck where après ski awaits. The office and guest meet and greet is located off the Balfour-Kaslo-Galena Bay Highway, in Meadow Creek, 100kms north of Nelson, BC. U.S guests typically fly into Spokane, WA and domestic travellers fly into Kelowna. Most guests choose to rent cars but shuttles can be arranged. Transportation to the lodge via snowcat is provided at set arrival and departure times.









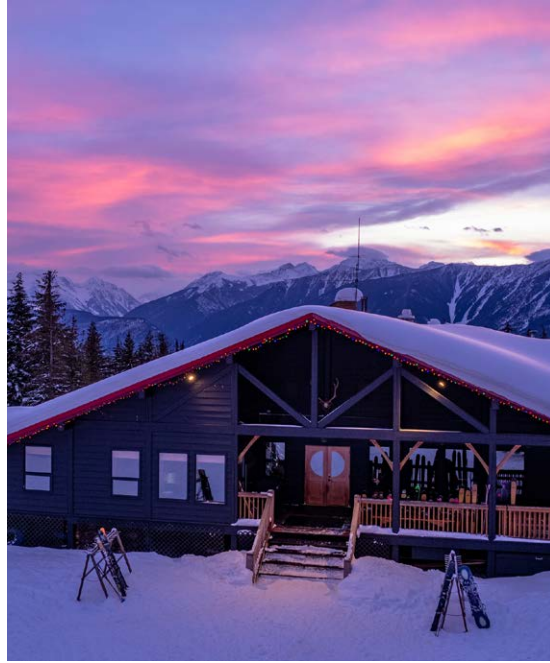
**SELKIRK  
SNOWCAT  
SKIING**





## **BEYOND THE SLOPES**

Selkirk's appeal continues beyond the slopes. The completely renovated lodge offers a rustic feel with a modern flair. Whether it's relaxing in the hot tub or sauna, curling up by the fire, having a massage or participating in the nightly activities, the lodge exudes an intimate, casual atmosphere, where guests feel very much at home. The Grouser Bar serves a curated selection of the best BC wines and local craft beers and is a popular spot for reliving the highlights of an epic powder day.



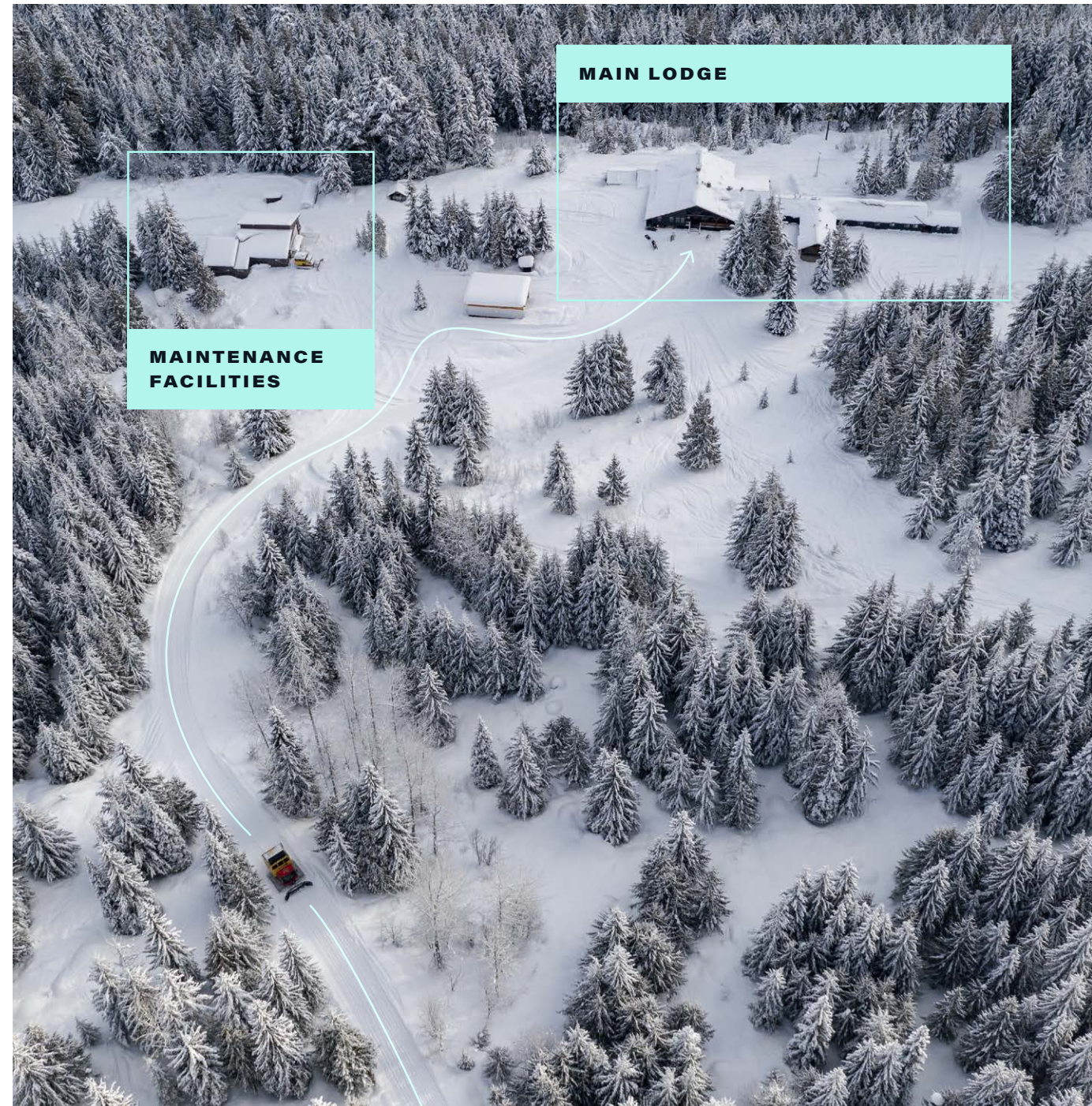


## TURNKEY OPERATION

Over the last 9 seasons, the company has reinvested upwards of \$3.5 million to improve every aspect of the business. This includes the purchasing of 3 Low-Hour Piston Bully 400s and industry leading custom guest boxes, a fleet of 8 new snowmobiles, 4 new company trucks, and a complete overhaul of the lodge and valley farmhosue. As an accredited member of **HeliCat Canada** for the last 40 years, Selkirk upholds the highest operational standards and safety procedures. Their commitment to staff shows with an average year over year staff retention rate of 90% earning Selkirk the reputation as a great employer. Their 40 staff pride themselves on delivering the best product in the industry. In the words of many guests, "Selkirk figured out the big stuff long ago, that allows the staff to focus on the details".

## MAINTENANCE FACILITIES

The 2,200 square foot, maintenance shop offers state-of-the-art, heated vehicle and equipment maintenance facilities to service 5 snowcats and 9 snowmobiles.



## MAIN LODGE

On-mountain improvements include the lodge, shop and accessory buildings. The 12,500 sq. ft. cozy and functional lodge includes all the necessary ingredients to appeal to a discerning clientele all under one roof:

- 19 guest rooms in a variety of configurations to appeal to differing budgets and tastes.
- Dining room overlooking the Purcell Mountain Range
- Bar/lounge with stone fireplace
- Games Lounge including pool table, ping pong and shuffleboard
- Den/conference room with digital projector and surround sound
- Gift shop
- Ski Rental shop
- Boot/Drying Room
- Massage Room
- Covered Hot Tub
- Wood burning Sauna
- Spacious commercial kitchen
- Manager's office
- Guides' Office
- Dedicated staff wing with 10 single occupancy staff rooms and shared bathroom and shower facilities
- Newly renovated, private owner's suite



## SNOWCATS

Back in the day, Allan Drury partnered with Bombardier to install the first passenger cab on a snowcat. Today, that same spirit of innovation drove the newly designed and improved cabs, now considered the gold standard of comfort and performance. Three Pisten Bully 400s rotate service for guests and 2 Prinoths BR 275s are employed for roadbuilding and hauling freight.

Power for the lodge and shop is generated by a 75kw run of river power hydro turbine. This low cost, green solution saves 20,000L of diesel fuel annually. Back-up power is provided by diesel generators.



## SUSTAINABILITY

Selkirk Snowcat Skiing is keenly aware that everything they do has an environmental impact which why they strive to meet guest needs while keeping the man-made impacts to a minimum. The lodge is powered by its own micro-hydro system (with diesel generator back up), waste is reduced through composting and recycling programs and much of the food served at the lodge is sourced locally.



## MEADOW CREEK FARMHOUSE

An integral part of the business is the picturesque farmhouse located in Meadow Creek that once served as the original lodge. Extensively renovated in 2021, it contains 3 oversized bedrooms, 2 full bathrooms, 2 half baths, large principal rooms, chef's kitchen, and games room. The private offices are staffed year round making it the central hub of the operation. The property also boasts several outbuildings, a tennis court, storage, staging facilities and plenty of guest parking. The farmhouse is owned personally by the shareholders and is available for purchase separately or can be packaged together with the business.



**GUEST SUITES ••**

**BOOT ROOM**

**DINING ROOM**

**AMENITIES**



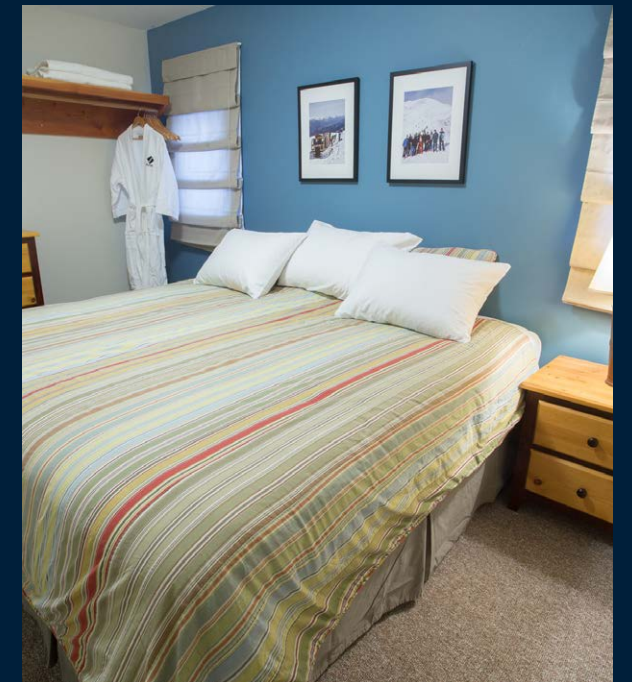


**GUEST SUITES ••**

**BOOT ROOM**

**DINING ROOM**

**AMENITIES**



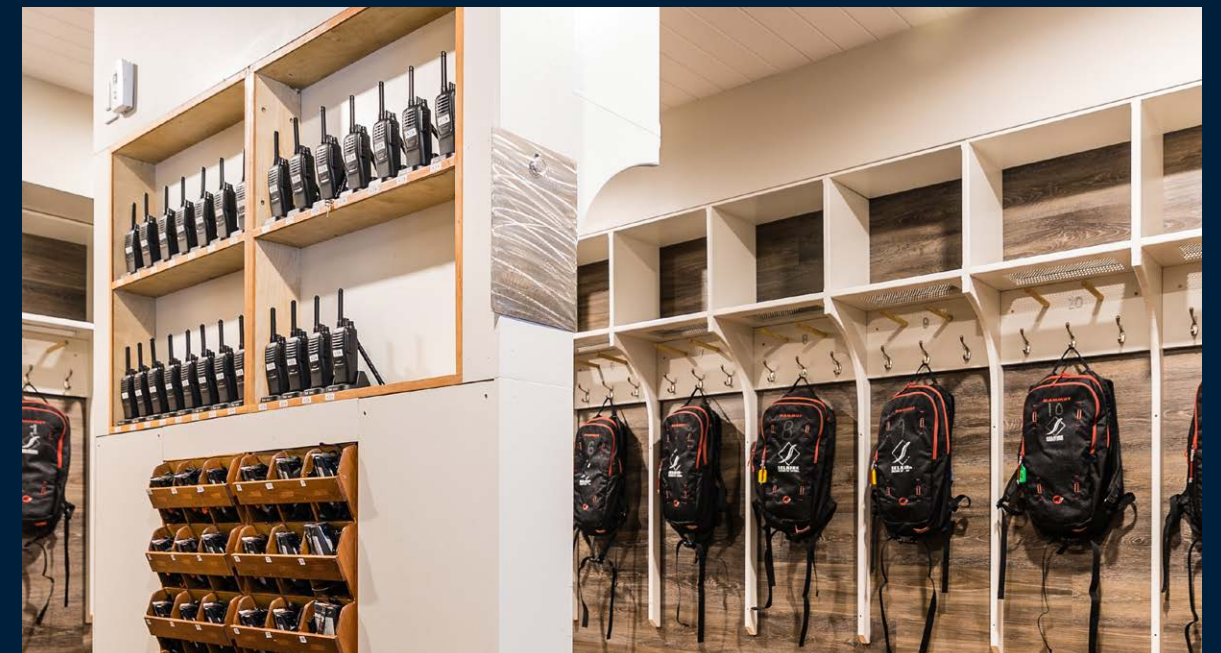
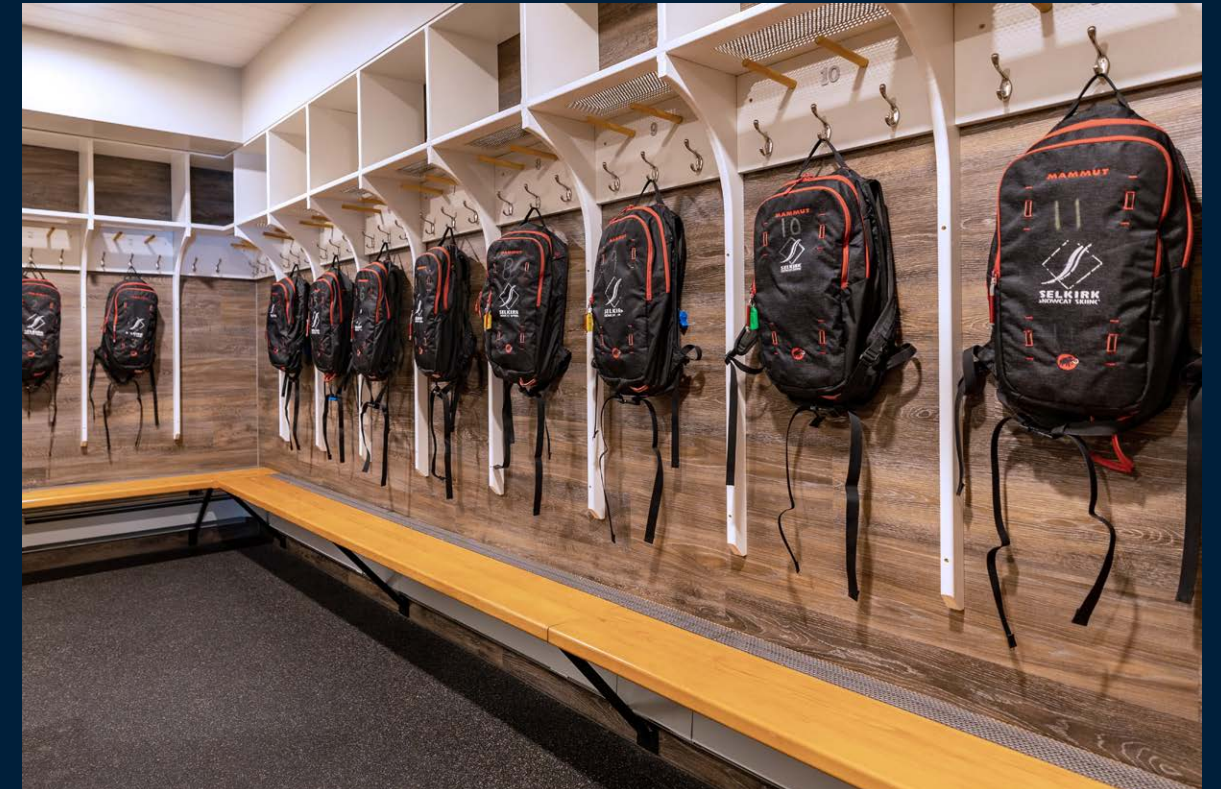


**GUEST SUITES ••**

**BOOT ROOM**

**DINING ROOM**

**AMENITIES**





**GUEST SUITES ••**

**BOOT ROOM**

**DINING ROOM**

**AMENITIES**



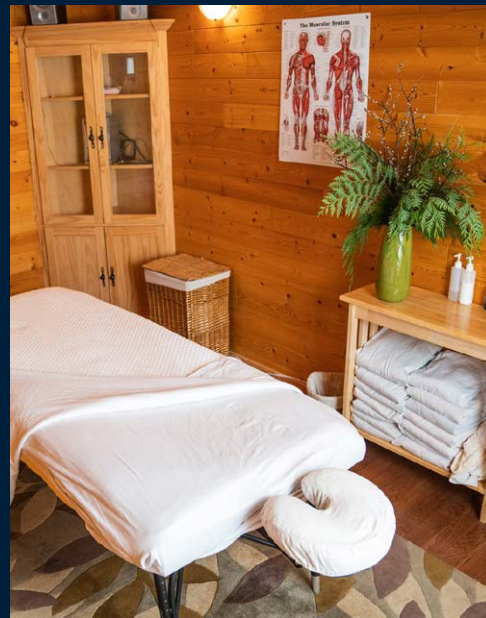


**GUEST SUITES ••**

**BOOT ROOM**

**DINING ROOM**

**AMENITIES**





## **EMBARK ON AN UNFORGETTABLE EXPERIENCE**

Selkirk Snowcat Skiing stands as a crown jewel in the world of adventure skiing, with accolades that few operations can match. Selkirk is the only catski operation featured in the renowned book *50 Places to Ski Before You Die*, and for good reason. With over 125 named runs, guests can experience terrain like no other without worrying about down days due to weather. Coupled with unparalleled service and attention to detail, the operation has a remarkable 90%+ guest rebook rate and has been fully booked each season since 2015/16. Its exclusive 5-day, 6-night program – a unique feature that sets Selkirk apart from every other operation – fosters connections and lifelong friendships.

Selkirk Snowcat Skiing embodies the spirit of adventure, drawing skiers and snowboarders into a world where the mountains feel untamed and boundless. Each run promises the thrill of discovery. There are no crowds, no lift lines—just the quiet hum of the snowcat as it winds its way to a hidden peak. There's a certain intimacy in this kind of skiing—the sense that you're sharing a moment with the mountains that few others ever experience. Snowcat skiing captures the romance of the wild—an invitation to step beyond the ordinary and embrace the pure, unfiltered joy of skiing in its most natural and thrilling form.



## **CONTACT**

For all inquiries, please contact:

Mark Lester  
Senior Vice President  
Unique Properties  
Personal Real Estate Corporation  
+1 604 692 1409  
[mark.lester@colliers.com](mailto:mark.lester@colliers.com)

Alam Pirani  
Vice Chairman  
Colliers Hotels  
+1 416 562 6665  
[alam.pirani@colliers.com](mailto:alam.pirani@colliers.com)

Robin McLuskie  
Managing Director  
Colliers Hotels  
+1 416 627 9841  
[robin.mcluskie@colliers.com](mailto:robin.mcluskie@colliers.com)

